



SATELLITE Freshwater LED

Flexible Strip Light



Upgrade a freshwater aquarium in minutes.

Installs quickly in most any hood, canopy or fixture.

Dialed-in color

Super bright 6500K white LEDs and rich 445nm blue LEDs come together in an ultra easy-to-install strip light that's dialed-in to enhance the colors in freshwater aquarium environments.

Our engineers have created custom color temperature settings that bring favorites like cichlids, live bearers and tetras to vivid life. This revolutionary strip light also features independent control of the white and blue LEDs, allowing users to select a color mode that brings their aquarium and all its residents into their best light.

More than a retrofit

Beyond the world of white and blue light, the Satellite LED Flexible Strip Light also features effects that mimic real-world aquatic conditions. With modes that dim periodically to create cloud cover effects, storm modes that will blow you away complete with lightning strikes and innovative evening modes that include lunar and dusk – it's sure to add new excitement and intrigue to any existing set up.

A fresh take on freshwater lighting

Drawing on our years of expertise in both fresh and marine aquarium product development we have created another industry first – a retrofit option that's engineered from the ground up for freshwater aquarium environments. Making it the perfect choice for a beginner looking for a fast and easy way to improve their existing lighting set-up, or a seasoned veteran seeking a significant upgrade.



Excitement installed in minutes

Simply unroll the strip light and cut to the appropriate length. Then, remove the adhesive backing and stick into place. We've also included clips and hardware for more custom installations.

Low voltage, super safe LEDs

Low, 12V DC, IP65 rated LEDs making them super safe for aquarium use. (see chart on reverse side for specs)

Plus it up!

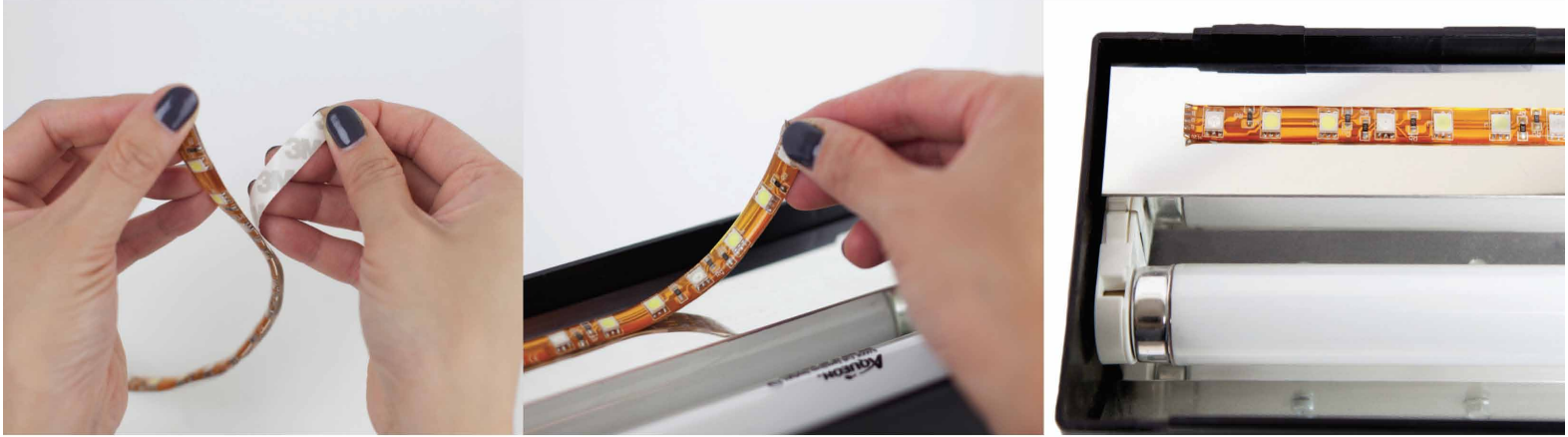
Like what you see? You'll also want to check out the Satellite Freshwater LED+ Strip Light. It adds even more excitement with the industry's first remote controlled, full-spectrum (RGB+White) LEDs in a flexible strip light. Learn more at www.current-usa.com.





SATELLITE Freshwater LED

Flexible Strip Light



Specifications			
Model #	4004	Watts:	13.2
Fits Aquariums	18" - 48"	LEDs	48, 6500K, White LEDs and 24, 445nm, Blue LEDs
Dimensions:	44" L x .375" W x .125" H	Total Lumens	800
Voltage	12Volts DC	Lifetime	Up to 50,000 hours life

➔ What's in the box

- 1 - Adhesive-backed 44" Satellite LED flexible strip
- 1 - DC 12V UL IP65 Transformer
- 1 - Wired remote control
- Complete Instructions
- Clips & Hardware



current.
Satellite Freshwater LED+
 Specifically designed for freshwater aquariums

© Copyright 2013. Patent Pending. Designed in CA. Made in China.



For more information, please visit www.current-usa.com

